

# ITK1x Series

THERMAL PRINTER



## Compact printer to address all your OEM integration needs

The ITK1xG series printer is one of the smallest, mountable, fully contained kiosk printers. Available in either 203dpi or 300dpi, with print speeds up to 300 mm/sec (11.8 inches/sec) and a robust built-in cutter, this rugged little printer will support a vast array of media to cover many of your customer applications. In addition, Practical Automation's reliable, custom made Windows 10 Microsoft signed driver and PADLL (API) will give you full control to remotely monitor your kiosk printer communications. Accepts Windows/ESC data streams across USB, Serial, and Ethernet standard ports, and soon to support legacy ticket printer protocol (FGL) as well. Available in either fixed width or an adjustable 2" to 3.25" paper width option, with black mark and/or hole sensors capability, the ITK1xG printer continues to build on Practical Automation's solid reputation in delivering years of reliable service.



**PRACTICAL AUTOMATION, INC.**  
The Alinabal Group of Companies

[www.practicalautomation.com](http://www.practicalautomation.com)

# ITK1x Series

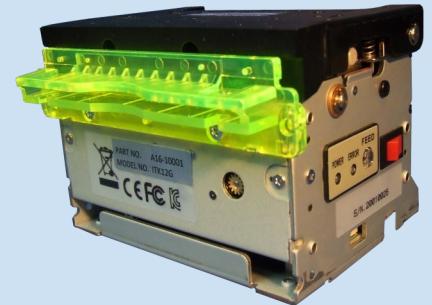
THERMAL PRINTER

## Characteristics:

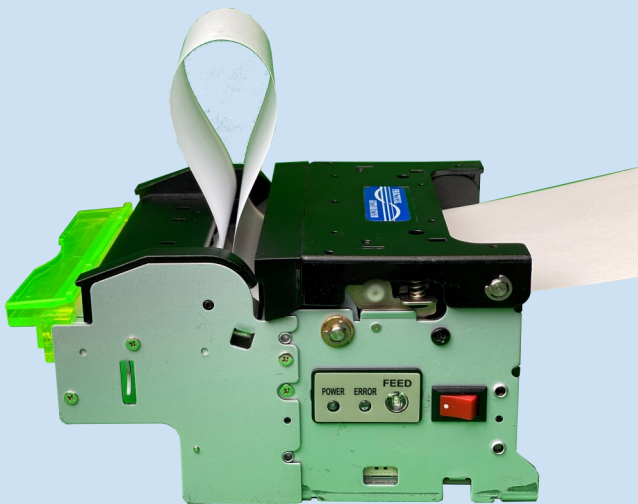
One of the smallest, mountable, fully contained kiosk printers on the market:

\* 76.5 D x 118 W x 73.5 H mm ( 3.01 D x 4.66 W x 2.89 H inches)

- ♦ Very fast > 300 mm/sec (11.5" /sec)
- ♦ 203dpi or 300dpi direct thermal printhead
- ♦ Full or partial cut capability
- ♦ Easy wide opening printhead for paper path access
- ♦ Automatic paper loading
- ♦ Ethernet + RS232 + USB Interfaces
- ♦ Fixed or adjustable Paper Width  
⇒ 50.8mm to 82.5mm (2" to 3.25")
- ♦ Paper lengths between 25mm to 1,041mm (1" to 41")
- ♦ Low paper alert option
- ♦ Out of paper sensor, reprint last page option through driver
- ♦ Optional mountable roll holder for 80mm, 150mm, and 200mm diameter rolls (3", 6" and 8")



**ITK1xG**



**ITK1xGP**

**(with looping presenter)**

## **Standard and additional (with presenter) capabilities:**

Multi mode dispensing per application needs

- ♦ Print, Cut, Drop (Standard ITK12G)
- ♦ Print, Cut, then Present (next ticket printed upon ticket taken)
- ♦ Print, Loop, Cut, then Present
- ♦ Print, Loop, Cut, Present, Retract/Dispose (time configurable when ticket not taken)
- ♦ Fast 1000mm /sec (40" /sec) presenter speed (when run in looping mode)

PRACTICAL

AUTOMATION

**PRACTICAL AUTOMATION, INC.**

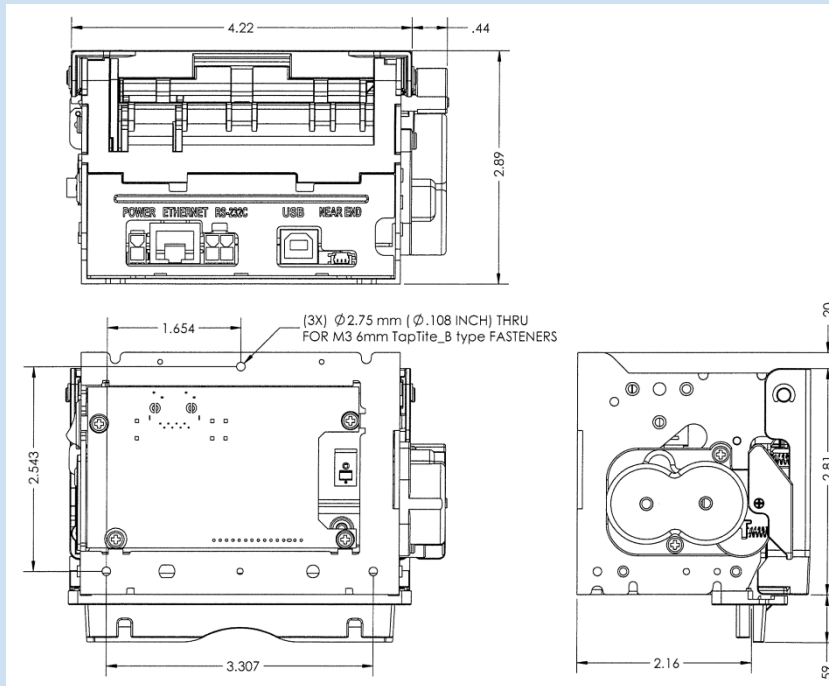
The Alinabal Group of Companies

[www.practicalautomation.com](http://www.practicalautomation.com)

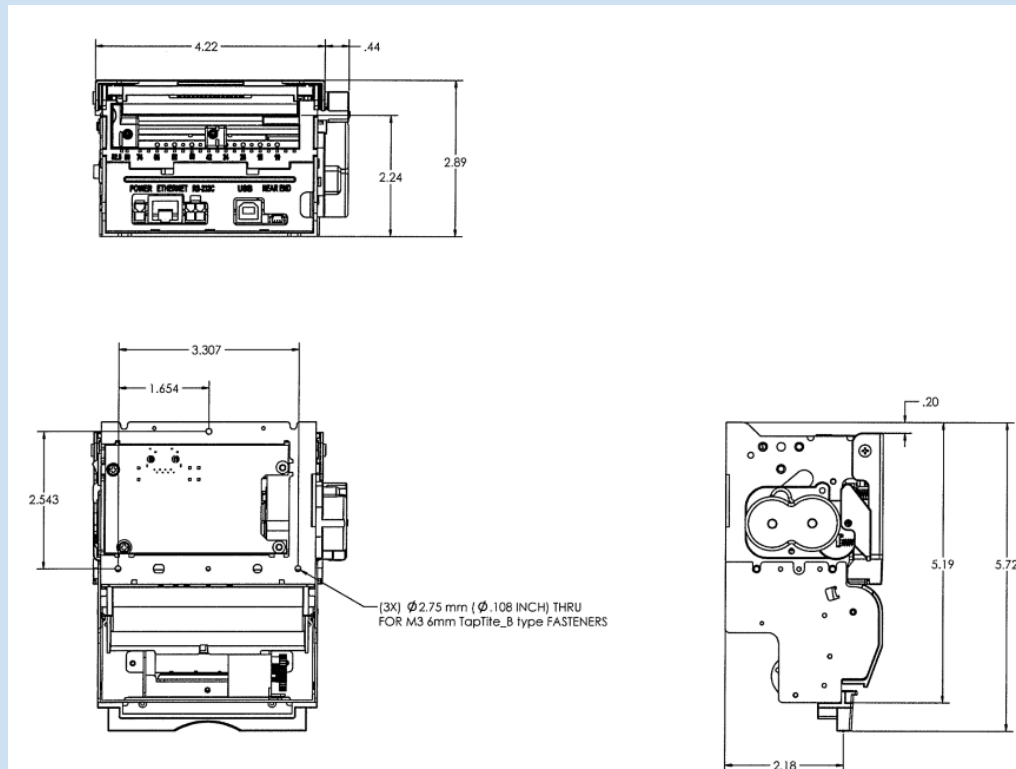
# ITK1x Series

THERMAL PRINTER

## ♦ Technical Drawings - Standard ITK1xG



## ♦ Technical Drawings - Presenter ITK1xGP



PRACTICAL

AUTOMATION

**PRACTICAL AUTOMATION, INC.**

The Alinabal Group of Companies

[www.practicalautomation.com](http://www.practicalautomation.com)

# ITK1x Series

THERMAL PRINTER

## Technical Sheet

Print Method	Thermal Direct
Number of dots	640 dots— 960 dot
Resolution	203 dpi standard - 300 dpi available
Printing Speed	300 (mm/sec)
Code page sets	PC/ 850,1251,866,1250,850,860,1252, +
Supported Barcodes	UPC/EAN13,Code39, I2of5,Codabar, 128,
Supported 2D Barcodes	PDF417, QR Code
Printing Direction	4 way rotation
Paper Width	60mm/77mm/80mm/82.5mm or 50mm-82.5mm adjustable
Paper Thickness	Standard 55 to 162 GSM / 2.5 to 7.5 mils Presenter 55 to 100 GSM / 2.5 to 5.0 mils
Printing Width	203dpi: 80 mm, 300dpi: 81.3mm
Paper Sensing	Black Mark / Hole
Roll Dimension	80mm / 150mm / 200mm (3", 6" and 8")
Emulation	ESC
Interfaces	USB 2.0 full speed - Serial RS232 (4pin) - Ethernet (100)
Ports	Rear
Drivers	Windows 10 Microsoft signed, Windows 7 supported
Power Supply	Input 100-240 VAC ~ 50/60 Hz 1.5A
Printer consumption	24VDC—2.5A
MTBF	113,000 hours - electronic board
Head Life	Thermal head 100 KM — 100 million pulses
Operation temperature	0°C / 40°C
Humidity	40% / 90 % RH (non-condensing)
Dimension	Standard 76.5D -118W- 73.5H mm (3.01d x 4.66w x 2.89h inch) Presenter 131D -118W- 73.5H mm (5.19d x 4.66w x 2.89h inch)
Weight	Standard 0.660 Kg 1.45 lbs Presenter 0.845 Kg 1.86 lbs

All specifications subject to change and availability

Copyright © Practical Automation Inc



**PRACTICAL AUTOMATION, INC.**  
The Alinabal Group of Companies

[www.practicalautomation.com](http://www.practicalautomation.com)

28 Woodmont Rd, Milford, CT. 06460 U.S.A, Phone +1.203.882.5640, [info@practicalautomation.com](mailto:info@practicalautomation.com)