

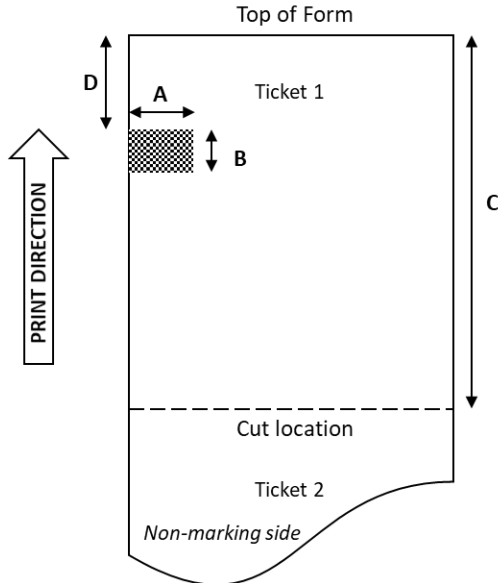
ITK1xG

PRINTER QUICK SET-UP GUIDE

When you first set up your printer, follow these simple steps to properly configure your printer to your specific tickets and/or application

FOR USING A TICKET WITH BLACK MARK/HOLE

- Measure target **Ticket Length (C)**, and distance from cut line to **Top of Mark (D)** in millimeters (mm)

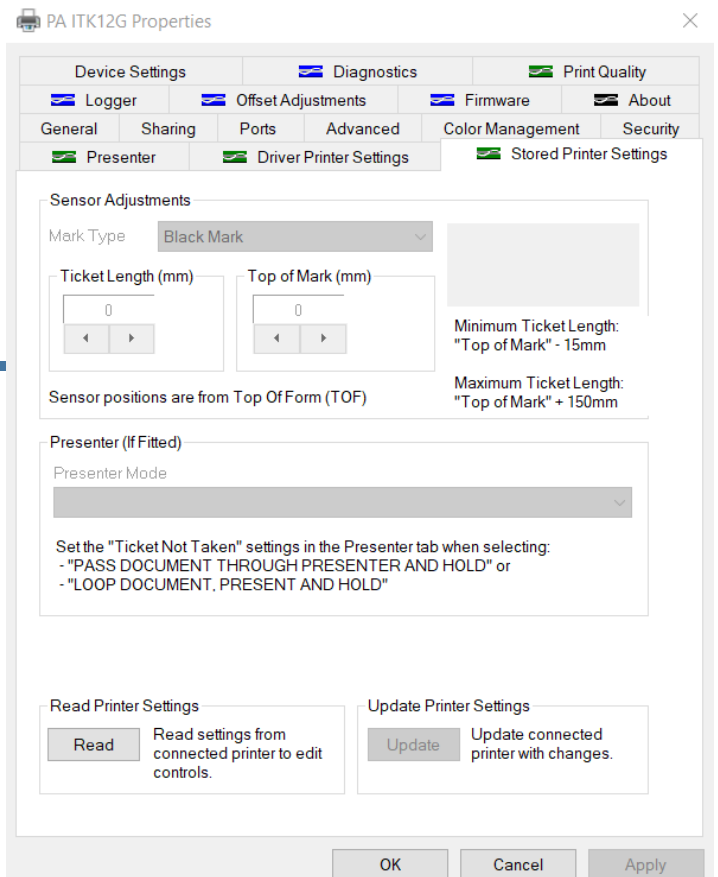


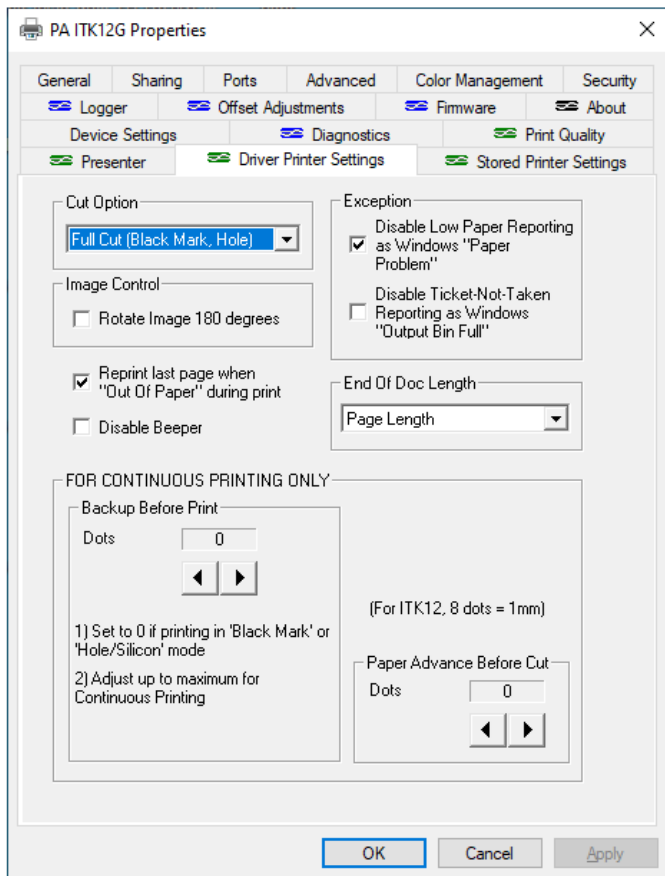
Black mark location on same side as printer head opening lever
(image to left represents non-marking side of tickets)

Definitions:

- A. Width of Mark – minimum 14mm
- B. Height of Mark – minimum 13mm
- C. **Ticket Length (mm)**
- D. **Top of Mark (mm)**

- Find the ITK12 or ITK123 driver icon (different paths depending on version of Windows), and open the “PA ITK12xG Properties” driver utility
 - Select “**General**” tab
 - Select “**Preferences**”
 - Select preferred orientation, then select “**Advanced**” button
 - Under “**Paper Size**”, select correct ticket size, press “**OK**”
 - Press “**Apply**” button
-
- Select “**Stored Printer Settings**” tab in driver
 - With printer ON, select “**Read**” button to load current printer settings
 - Under “**Mark Type**”, set to “**Black Mark**” or “**Hole/Silicon**”
 - Enter **Ticket Length (C)** and **Top of Mark (D)** measurements
 - If the printer does NOT have a presenter, the Presenter Mode will be grayed out and blank
 - Select “**Update**” button, wait until loading is complete



FOR USING A TICKET WITH BLACK MARK/HOLE (cont.)

- Select “**Driver Printer Settings**” tab
- Set “Cut Option” to “Full Cut (Black Mark, Hole)”
- Confirm that “Backup Before Print” under “FOR CONTINUOUS PRINTING ONLY” section is set to “0” for Black Mark
- Press “Apply” (if highlighted)

- Select “**Print Quality**” tab
- Select required speed and intensity levels for application
- Press “Apply” (if highlighted) and then “OK” to close driver window

ADDITIONAL NOTES:

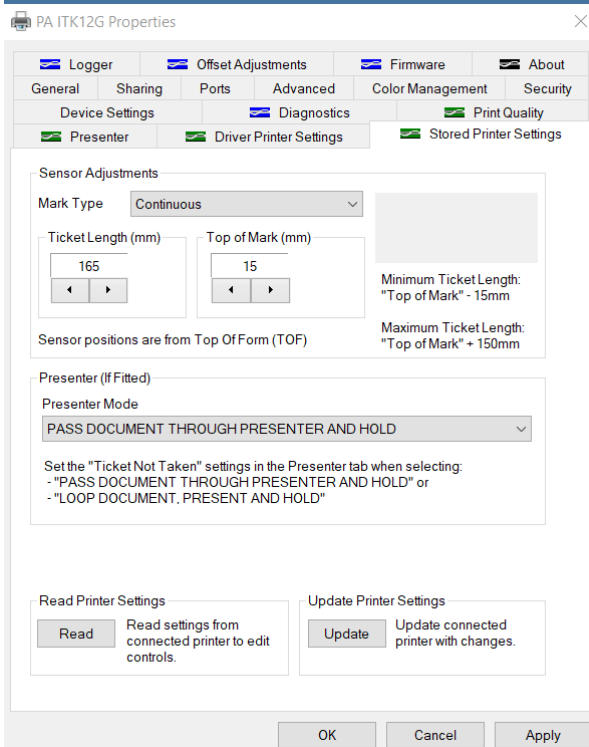
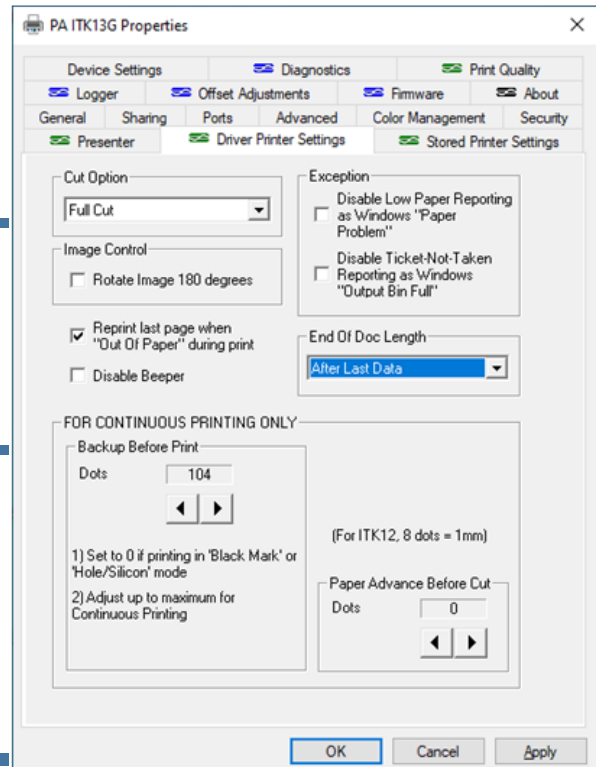
- Check that Preference Settings in application document are set to the correct ticket size, as this setting could override Driver paper size setting
- If the low paper sensor is installed (normally with roll holder), but you are using ticket stock or somehow bypassing the sensor with roll stock, please check that the **Exception** setting <Disable Low Paper Reporting as Windows “Paper Problem”> found in the **Driver Printer Settings** tab is selected in order to avoid a Windows “Paper Problem” error message.

ITK1xG PRINTER QUICK SET-UP GUIDE

When you first set up your printer, follow these simple steps to properly configure your printer to your specific tickets and/or application

FOR USING CONTINUOUS ROLL PAPER

- Find the ITK12 or ITK13 driver icon (different paths depending on version of Windows), and open the PA ITK1xG Properties driver utility
 - Select **“General”** tab
-
- Select **“Preferences”**
 - Select preferred orientation, then select **“Advanced”** button
 - Under **“Paper Size”**, select correct ticket size, press **“OK”** to return to previous screen
 - Press **“Apply”** button
-
- Select **“Driver Printer Settings”** tab in driver
 - Under **“Cut Option”**, select **“Full Cut”**
 - Select **“Reprint last page when “Out Of Paper” during print”**
 - Adjust **“Back-up before print”** to maximum setting (will differ for ITK12 vs. ITK13)
 - Press **“Apply”** button at bottom of screen (if highlighted)



- Select **“Stored Printer Settings”** tab
- Select **“Read”** button to load current printer settings
- Set **“Mark Type”** to **“Continuous”**
- If the printer does NOT have a presenter, the Presenter Mode will be grayed out and blank
- Select **“Update”** button, wait until loading is complete
- Select **“Print Quality”** tab
- Select required speed and intensity levels for application
- Press **“Apply”** (if highlighted) and then **“OK”** to close driver window

ADDITIONAL NOTES:

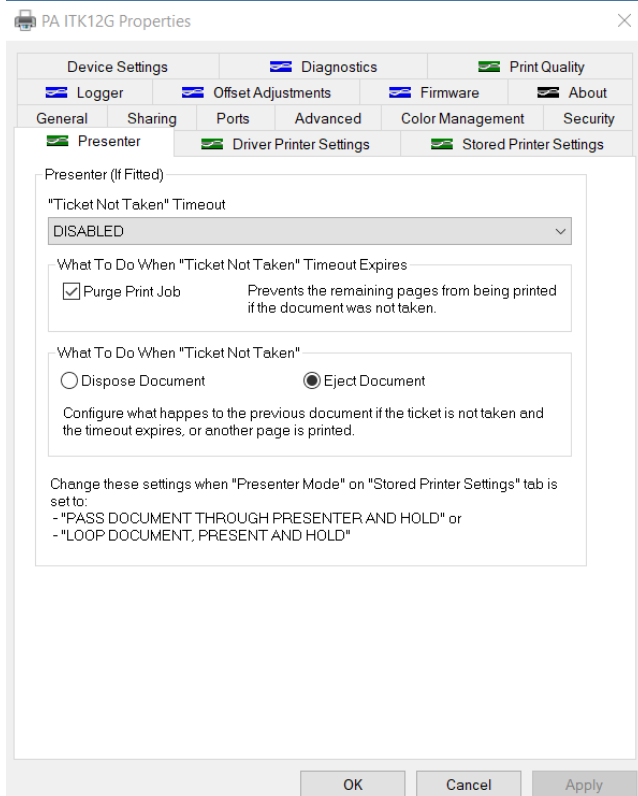
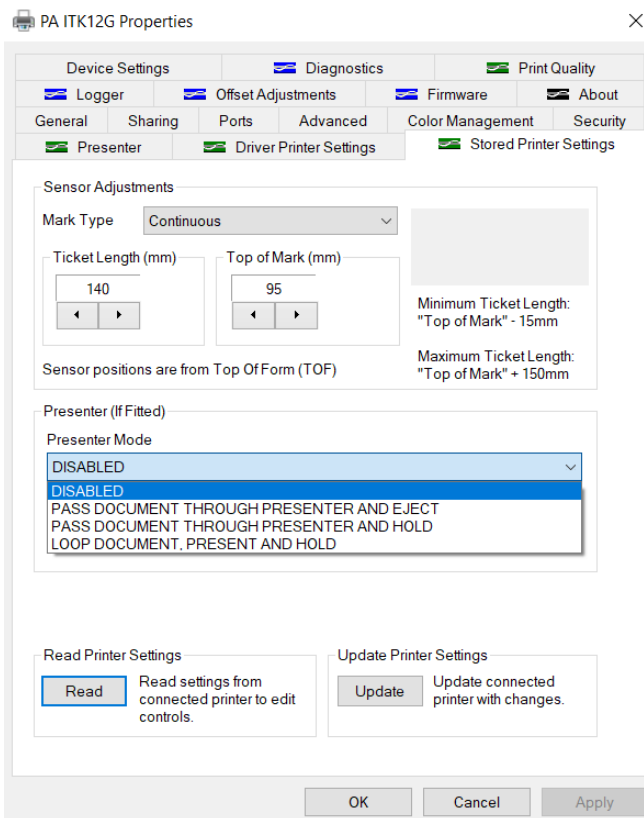
- Check that Preference Settings in application document are set to the correct ticket size, as this setting could override Driver paper size setting
- If the low paper sensor is installed (normally with roll holder), but you are using ticket stock or somehow bypassing the sensor with roll stock, please check that the **Exception** setting <Disable Low Paper Reporting as Windows “Paper Problem”> found in the **Driver Printer Settings** tab is selected in order to avoid a Windows “Paper Problem” error message.

ITK1xG PRINTER QUICK SET-UP GUIDE

If your printer is equipped with a presenter, please follow the following instructions after setting your printer to either Black Mark or Continuous

FOR USING A PRINTER WITH A PRESENTER

- Select **“Stored Printer Settings”** tab in driver
- Select **“Read”** button to load current printer settings
- Under **“Mark Type”**, set to either Black Mark, Hole/Silicon, or Continuous as per previous instructions
- From the drop down menu under **“Presenter”**, select one of the following settings:
 - ⇒ **DISABLED** - Document prints and is immediately ejected
 - ⇒ **PASS DOCUMENT THROUGH PRESENTER AND EJECT** - Document is printed and then immediately ejected
 - ⇒ **PASS DOCUMENT THROUGH PRESENTER AND HOLD** - document is printed and presented, then held: if not taken, disposition is then dictated by selection of options in PRESENTER tab
 - ⇒ **LOOP DOCUMENT, PRESENTER AND HOLD** - document is looped over top of printer, then fed through presenter and held: if not taken, disposition is then dictated by selection of options in PRESENTER tab. (DO NOT select this option if using thicker fan fold ticket stock)
- Select **“Update”** button, wait until loading is complete



- Select **“Presenter”** tab in driver
- Select a specific time-out option from the first drop down menu (Ticket Not Taken Timeout), where **DISABLED** indicates no action until next document is printed, otherwise a prescribed time is passed until action taken.
- Then select action to be performed either after the timeout option is met, or when a new document is sent down to the printer
 - ⇒ **DISPOSE** - document is retracted back into the presenter and then disposed underneath printer. Please insure that the bottom path of the presenter unit is not blocked to prevent jamming of document when retracted. (DO NOT select dispose if using thicker fan fold paper stock)
 - ⇒ **EJECT** - document is ejected from presenter unit
- Select **“Purge Print Job”** button to eliminate rest of document if first page not taken
- Press **“Apply”** button